

**WALL TYPES NOTES:**

- WHERE SPECIFIC DESIGNATIONS ARE NOT SHOWN, IT SHALL BE ASSUMED THAT CONTINUITY OF A SPECIFIED PARTITION SHALL BE MAINTAINED UNTIL INTERSECTING A PARTITION OF DIFFERING SPECIFICATIONS.
- CONSTRUCTION IS LISTED IN ORDER FROM SIDE OF WALL THAT TAG IS INDICATED.
- EXTEND WALLS TO UNDERSIDE OF STRUCTURE ABOVE - UNLESS NOTED OTHERWISE.
- ALL INTERIOR WALLS ARE TO BE TYPE S1 UNLESS NOTED OTHERWISE.
- TERMINATE TOP OF INTERIOR NON-LOAD BEARING CMU WALLS 1/2" BELOW BOTTOM OF FLOOR/ROOF PRECAST FLANK. FILL VOID WITH COMPRESSIBLE FILLER.

**INTERIOR WALL TYPES:**

- S1** - 5/8" GYPSUM BOARD  
- 3 5/8" METAL STUDS AT 16" O.C.  
- 5/8" GYPSUM BOARD
- S2** - 5/8" GYPSUM BOARD  
- 6" METAL STUDS AT 16" O.C.  
- 5/8" GYPSUM BOARD
- S3** - 3/4" PLYWOOD (CLASS C OR BETTER FINISH - FLAME SPREAD 76-200, SMOKE DEVELOPED 0-450), PAINTED WHITE, FROM FLOOR TO 8'-0" A.F.F.  
- 5/8" GYPSUM BOARD FROM 8'-0" A.F.F. TO STRUCTURE ABOVE  
- 3 5/8" METAL STUDS AT 16" O.C.  
- 5/8" GYPSUM BOARD
- S4** - 3/4" PLYWOOD (CLASS C OR BETTER FINISH - FLAME SPREAD 76-200, SMOKE DEVELOPED 0-450), PAINTED WHITE, FROM FLOOR TO 8'-0" A.F.F.  
- 5/8" GYPSUM BOARD FROM 8'-0" A.F.F. TO STRUCTURE ABOVE  
- 2" METAL STUDS AT 16" O.C.  
- 5/8" GYPSUM BOARD
- S5** - 5/8" GYPSUM BOARD  
- VAPOR BARRIER TO STRUCTURE ABOVE  
- 3 5/8" METAL STUDS AT 16" O.C.  
- 5/8" GYPSUM BOARD
- F1** - 5/8" GYPSUM BOARD (TAG SIDE ONLY)  
- 1 1/2" METAL STUD FURRING AT 16" O.C.
- F2** - 5/8" GYPSUM BOARD (TAG SIDE ONLY)  
- 2 1/2" METAL STUD FURRING AT 16" O.C.
- F3** - 5/8" GYPSUM BOARD (TAG SIDE ONLY)  
- 3 5/8" METAL STUD FURRING AT 16" O.C.
- F4** - 5/8" GYPSUM BOARD LAMINATED (TAG SIDE ONLY)
- F5** - 3/4" PLYWOOD (CLASS C OR BETTER FINISH - FLAME SPREAD 76-200, SMOKE DEVELOPED 0-450), PAINTED WHITE, FROM FLOOR TO 8'-0" A.F.F.  
- 5/8" GYPSUM BOARD FROM 8'-0" A.F.F. TO STRUCTURE ABOVE  
- 2 1/2" METAL STUD FURRING AT 16" O.C.
- F6** - 3/4" PLYWOOD (CLASS C OR BETTER FINISH - FLAME SPREAD 76-200, SMOKE DEVELOPED 0-450), PAINTED WHITE, FROM FLOOR TO 8'-0" A.F.F.  
- 5/8" GYPSUM BOARD FROM 8'-0" A.F.F. TO STRUCTURE ABOVE  
- VAPOR BARRIER TO STRUCTURE ABOVE  
- 2 1/2" METAL STUD FURRING AT 16" O.C.
- SW** - (2) LAYERS TYPE 'X' 5/8" GYPSUM BOARD  
- 2 1/2" SHAFT WALL METAL STUDS AT 16" O.C.  
- 1" GYPSUM BOARD LINER PANELS  
- EXTEND STUDS TO UNDERSIDE OF STRUCTURE ABOVE  
- TWO HOUR RATED CONSTRUCTION (U.L. DESIGN NO. U415)
- SW-1** - 3/4" PLYWOOD (CLASS C OR BETTER FINISH - FLAME SPREAD 76-200, SMOKE DEVELOPED 0-450), PAINTED WHITE, FROM FLOOR TO 8'-0" A.F.F.  
- (2) LAYERS 5/8" TYPE 'X' GYPSUM BOARD  
- 2 1/2" SHAFT WALL METAL STUDS AT 16" O.C.  
- 1" GYPSUM BOARD LINER PANELS  
- EXTEND STUDS TO UNDERSIDE OF STRUCTURE ABOVE  
- TWO HOUR RATED CONSTRUCTION (U.L. DESIGN NO. U415)
- SW-2** - 3/4" PLYWOOD (CLASS C OR BETTER FINISH - FLAME SPREAD 76-200, SMOKE DEVELOPED 0-450), PAINTED WHITE, FROM FLOOR TO 8'-0" A.F.F.  
- (2) LAYERS 5/8" TYPE 'X' GYPSUM BOARD  
- 2 1/2" SHAFT WALL METAL STUDS AT 16" O.C.  
- 1" GYPSUM BOARD LINER PANELS  
- EXTEND STUDS TO UNDERSIDE OF STRUCTURE ABOVE  
- TWO HOUR RATED CONSTRUCTION (U.L. DESIGN NO. U415)

**POURED CONCRETE WALL TYPES:**

- C1** - 8" POURED CONCRETE W/ R/F AS SPECIFIED
- C2** - 1'-3" POURED CONCRETE W/ R/F AS SPECIFIED
- C3** - 1'-7" POURED CONCRETE W/ R/F AS SPECIFIED

**EXTERIOR WALL TYPES:**

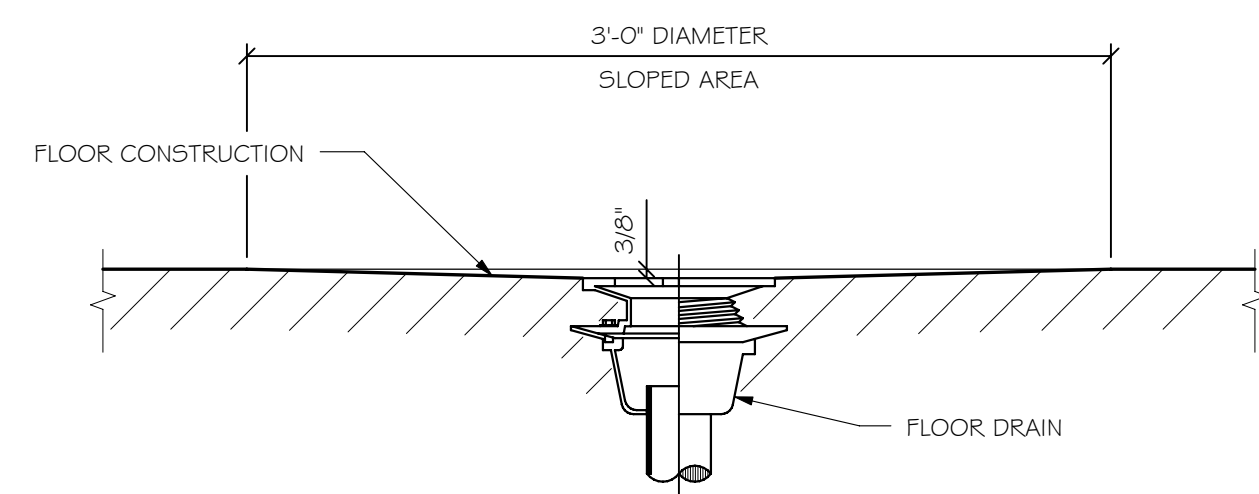
- E1** TYPICAL 1'-4" METAL WALL PANEL CONSTRUCTION  
- 3" INSULATED METAL WALL PANEL  
- 7/8" HAT CHANNELS AT 16" O.C.  
- FLUID APPLIED AIR BARRIER  
- 1/2" CMU W/ R/F AS SPECIFIED, FULL HEIGHT U.N.O.
- E2** TYPICAL MASONRY VENEER WALL CONSTRUCTION W/ FURRING  
- 4" UTILITY BRICK  
- AIR SPACE  
- 2" RIGID INSULATION  
- FLUID APPLIED AIR BARRIER  
- 1/2" CMU W/ R/F AS SPECIFIED, FULL HEIGHT U.N.O.
- E2-1** TYPICAL MASONRY VENEER WALL CONSTRUCTION  
- 4" UTILITY BRICK  
- AIR SPACE  
- 2" RIGID INSULATION  
- FLUID APPLIED AIR BARRIER  
- 1/2" CMU W/ R/F AS SPECIFIED, FULL HEIGHT U.N.O.
- E3** TYPICAL 1'-0" METAL WALL PANEL CONSTRUCTION  
- 3" INSULATED METAL WALL PANEL  
- 7/8" HAT CHANNELS AT 16" O.C.  
- FLUID APPLIED AIR BARRIER  
- 8" CMU W/ R/F AS SPECIFIED, FULL HEIGHT U.N.O.
- E4** TYPICAL SPANDREL PANEL WALL CONSTRUCTION  
- SPANDREL PANEL  
- 3 5/8" METAL STUD FURRING AT 16" O.C.  
- 5/8" GYPSUM BOARD
- E5** TYPICAL 1'-3" CAVITY WALL CONSTRUCTION  
- 4" UTILITY BRICK  
- AIR SPACE  
- 2" RIGID INSULATION  
- FLUID APPLIED AIR BARRIER  
- 6" CMU W/ R/F AS SPECIFIED, FULL HEIGHT U.N.O.  
- 4" UTILITY BRICK

**MODIFIERS:**

- A** - 5/8" GYPSUM BOARD AT TAG SIDE ONLY
- S** - SOUND ATTENUATION BLANKETS

**CONCRETE BLOCK WALL TYPES:**

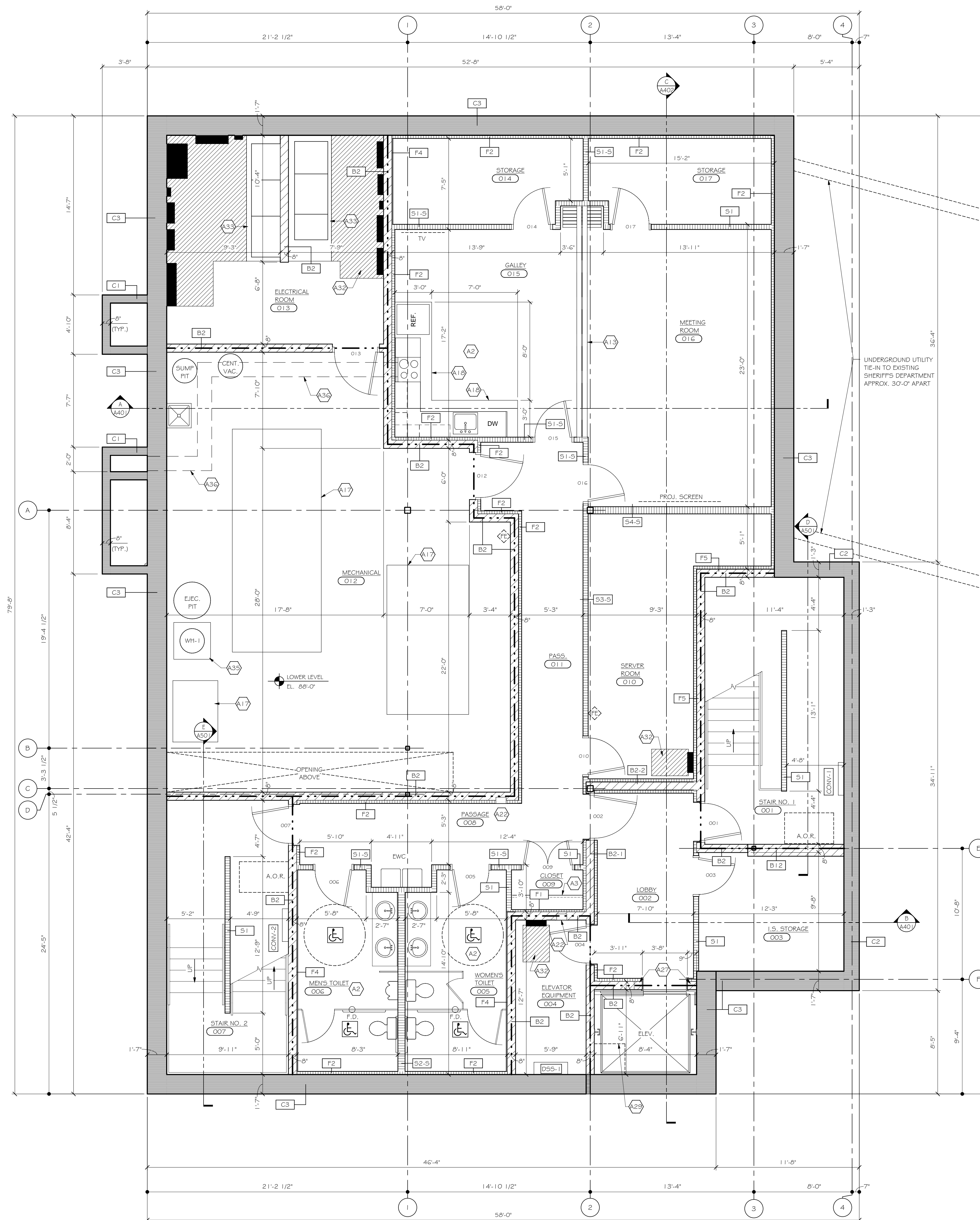
- B1** - 6" CMU W/ R/F AS SPECIFIED, FULL HEIGHT U.N.O.
- B2** - 8" CMU W/ R/F AS SPECIFIED, FULL HEIGHT U.N.O.
- B2-1** - 5/8" GYPSUM BOARD  
- 2 1/2" METAL STUD FURRING AT 16" O.C.  
- 8" CMU W/ R/F AS SPECIFIED, FULL HEIGHT U.N.O.  
- 2 1/2" METAL STUD FURRING AT 16" O.C.  
- 5/8" GYPSUM BOARD
- B2-2** - 3/4" PLYWOOD (CLASS C OR BETTER FINISH - FLAME SPREAD 76-200, SMOKE DEVELOPED 0-450), PAINTED WHITE, FROM FLOOR TO 8'-0" A.F.F.  
- 5/8" GYPSUM BOARD FROM 8'-0" A.F.F. TO STRUCTURE ABOVE  
- 8" CMU W/ R/F AS SPECIFIED, FULL HEIGHT U.N.O.  
- 5/8" GYPSUM BOARD
- B3** - 12" CMU W/ R/F AS SPECIFIED, FULL HEIGHT U.N.O.
- B3-1** - 4" FACE BRICK (TAG SIDE ONLY)  
- 12" CMU W/ R/F AS SPECIFIED, FULL HEIGHT U.N.O.
- B3-2** - 5/8" FIBER CEMENT (TAG SIDE ONLY)  
- 3 5/8" METAL STUDS AT 16" O.C.  
- 12" CMU W/ R/F AS SPECIFIED, FULL HEIGHT U.N.O.



**FLOOR DRAIN DETAIL**



1 1/2" = 1'-0"



**LOWER LEVEL FLOOR PLAN**

SCALE: 1/4" = 1'-0"

**GENERAL NOTES:**

- SEE SHEET A701 FOR CASEWORK AND TOILET ROOM ELEVATIONS.
- LOCATE INTERIOR MOVEMENT JOINTS IN CMU AND GYPSUM BOARD PER SPECIFICATIONS. SEE SHEET A301 FOR MOVEMENT JOINTS IN CMU.
- SEE EXTERIOR ELEVATIONS FOR LOCATION OF MOVEMENT JOINTS (M.J.'s) IN EXTERIOR WALL CONSTRUCTION.
- GENERAL CONTRACTOR SHALL PROVIDE WOOD BLOCKING IN WALL CONSTRUCTION TO ACCOMMODATE ANY OWNER FURNISHED WALL HANG ITEMS. COORDINATE EXACT LOCATIONS WITH OWNER. GEN. CONTRACTOR SHALL PROVIDE 250 LINEAL FEET OF 2 x 8 WOOD BLOCKING IN BID.
- SEE SHEET A602 FOR ROOM FINISHES.
- FOR TOP OF NON-LOAD BEARING WALLS/SLIP-JOINT - SEE 3/A102.
- INDICATES NEW WALL MOUNTED FIRE EXTINGUISHER - MOUNT AT 48" A.F.F.
- PROVIDE GROMMETS IN RAISED PANEL ACCESS FLOORING AS PER EQUIPMENT LAYOUT.

**PLAN NOTES:**

- A2** FOR INTERIOR ELEVATIONS OF THIS ROOM - SEE SHEET A701.
- A3** POLE AND SHELF - SEE 4/A701.
- A13** PANEL PARTITION SUPPORTED BY STRUCTURE ABOVE - SEE 4/A102.
- A17** 4" HIGH CONCRETE EQUIPMENT PAD BY G.C. - COORDINATE EXACT SIZE AND LOCATION WITH MECHANICAL CONTRACTOR.
- A18** CERAMIC TILE FLOORING IN THIS AREA - SEE ROOM FINISH SCHEDULE FOR MORE INFORMATION.
- A22** RECESSED FIRE EXTINGUISHER CABINET AND FIRE EXTINGUISHER PROVIDED BY GENERAL CONTRACTOR.
- A27** MASON IN ROUGH OPENING AFTER ELEVATOR DOOR FRAME IS SET.
- A29** 30" x 30" SUMP PIT.
- A32** HATCH INDICATES REQUIRED CLEAR FLOOR SPACE.
- A33** 4" HIGH CONCRETE EQUIPMENT PAD BY G.C. - COORDINATE EXACT SIZE AND LOCATION WITH ELECTRICAL CONTRACTOR.
- A35** 4" HIGH CONCRETE EQUIPMENT PAD BY G.C. - COORDINATE EXACT SIZE AND LOCATION WITH PLUMBING CONTRACTOR.
- A36** WRAP DUCTWORK FROM RANGE HOOD WITH 2 HOUR SHAFT WALL CONSTRUCTION (U.L. DESIGN NO. U415).

**PARTITION LEGEND**

- GYPSUM BOARD ON METAL STUDS AT 16" O.C.
  - FACE BRICK
  - CMU WALL W/ HORIZ. R/F AT 16" O.C.
  - POURED CONCRETE WALL
  - SOFFIT CONSTRUCTION ABOVE - SEE REFLECTED CEILING PLANS FOR ADDITIONAL INFORMATION
  - TWO-HOUR FIRE BARRIER
- NOTE:  
FOR BRACING TOP OF NON-LOAD BEARING WALLS, SEE 3/A102.

**SOMERVILLE**  
ARCHITECTS | ENGINEERS | CONSTRUCTION SERVICES  
SOMERVILLE, INC. - 2100 RIVERSIDE DRIVE - GREEN BAY, WISCONSIN - 54301-2390  
(920) 437-8136 WWW.SOMERVILLEINC.COM FAX (920) 437-1131

**COMMUNICATIONS AND TECHNOLOGY BUILDING FOR: MANITOWOC COUNTY**

MANITOWOC, WISCONSIN  
SHEET DESCRIPTION:  
**LOWER LEVEL FLOOR PLAN**

ISSUED FOR  
**CONSTRUCTION DOCUMENTS**

This copyrighted drawing may not be reproduced without the written permission of Somerville, Inc. Permission or copies of this drawing may be obtained by calling 920-437-8136 or emailing PrintRoom@somervilleinc.com.

VERIFY EXISTING DATA AT SITE  
Copyright © 2009 Somerville, Inc.

DATE: 9/01/09 PROJECT NO: 5897  
SHEET

**A101**

9/1/2009 8:40:52 AM